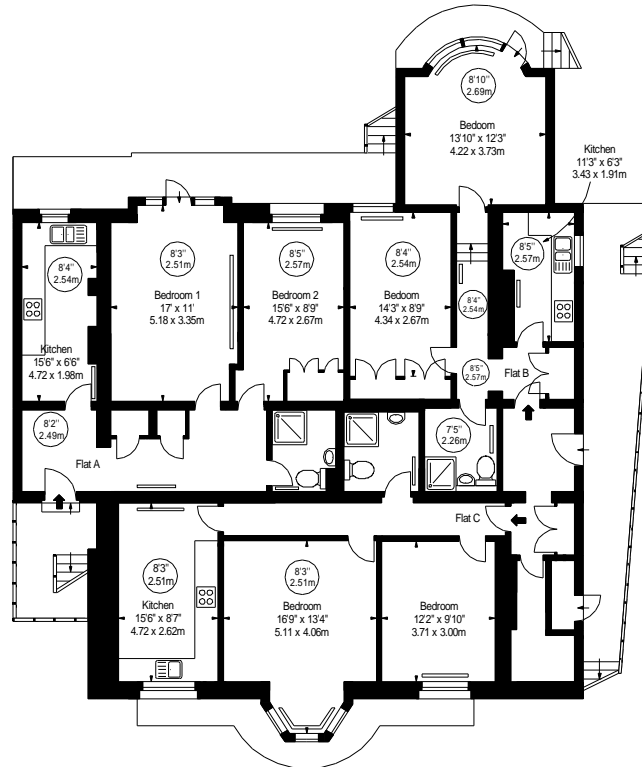



KEY :

— = Radiator

7'5"
2.26m = Ceiling Height



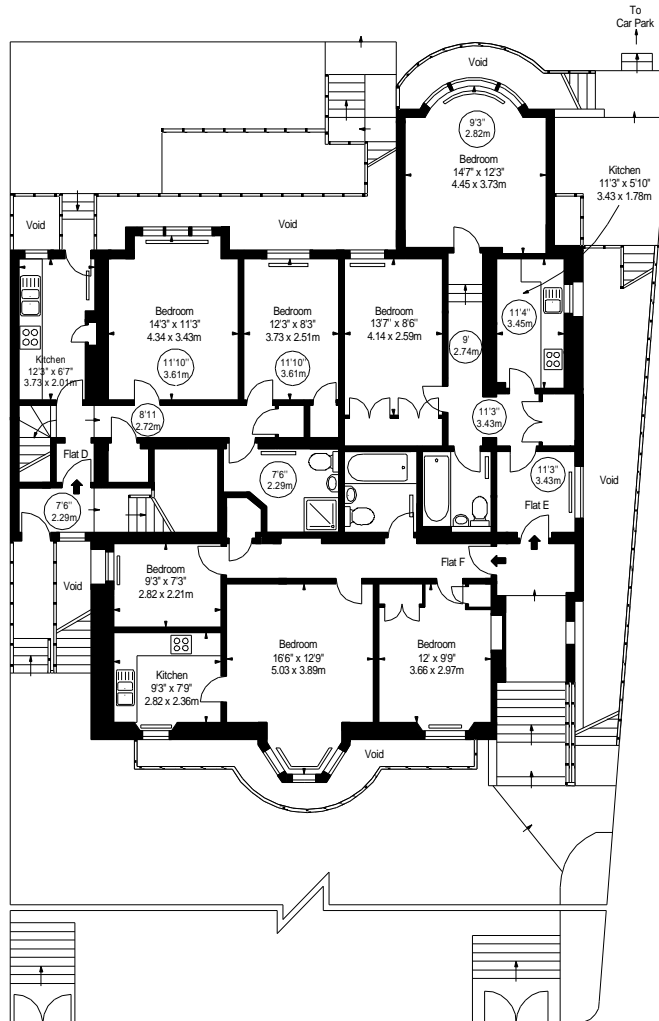
LOWER GROUND FLOOR

Property Details: MONTFORD HOUSE 25 QUEENS ROAD RICHMOND SURREY, TW10 6JW		Surveyed and Drawn By:  Sunnyhill House, 3-7 Sunnyhill Road London, SW16 2UG Tel: 0845 257 2023 Fax: 0845 257 2024 info@bkrfloorplans.co.uk www.bkrfloorplans.co.uk © BKR 2011
SCALE 1:200 @ A4	Plans Drawn: 09.09.2011	
ILLUSTRATION FOR IDENTIFICATION PURPOSES . * As Defined by RICS - Code of Measuring Practice APPROX. GROSS INTERNAL AREA * 6764 Ft ² - 628.38 M ²		

KEY :

— = Radiator

7'5"
2.26m = Ceiling Height



GROUND FLOOR

Property Details:

MONTFORD HOUSE
25 QUEENS ROAD
RICHMOND
SURREY, TW10 6JW

Surveyed and Drawn By:



Sunnyhill House, 3-7 Sunnyhill Road
 London, SW16 2UG

SCALE
1:200 @ A4

Plans Drawn:
09.09.2011

ILLUSTRATION FOR IDENTIFICATION PURPOSES .
 * As Defined by RICS - Code of Measuring Practice

APPROX. GROSS INTERNAL AREA *
6764 Ft² - 628.38 M²

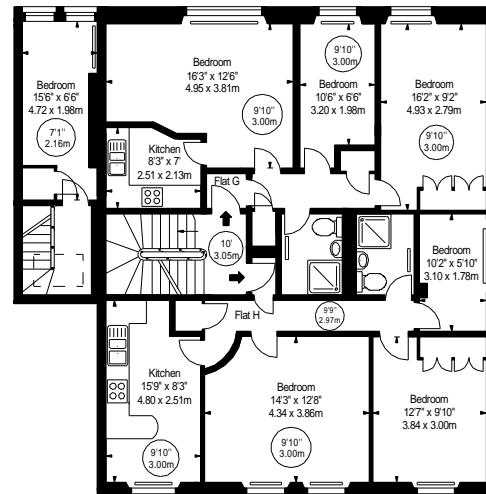
Tel: 0845 257 2023
 Fax: 0845 257 2024
info@bkrfloorplans.co.uk
www.bkrfloorplans.co.uk

© BKR 2011

KEY :

— = Radiator

7'5"
2.26m = Ceiling Height



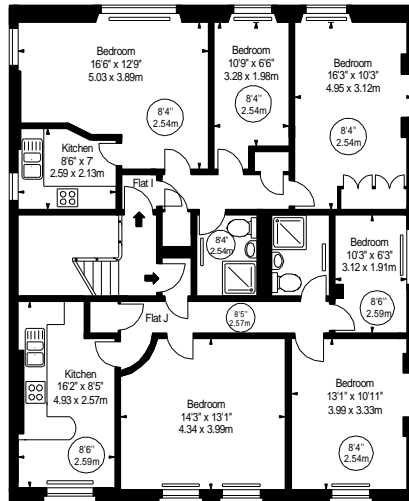
FIRST FLOOR

Property Details: MONTFORD HOUSE 25 QUEENS ROAD RICHMOND SURREY, TW10 6JW		Surveyed and Drawn By: BKR Sunnyhill House, 3-7 Sunnyhill Road London, SW16 2UG Tel: 0845 257 2023 Fax: 0845 257 2024 info@bkrfloorplans.co.uk www.bkrfloorplans.co.uk © BKR 2011
SCALE 1:200 @ A4	Plans Drawn: 09.09.2011	
ILLUSTRATION FOR IDENTIFICATION PURPOSES. * As Defined by RICS - Code of Measuring Practice APPROX. GROSS INTERNAL AREA * 6764 Ft ² - 628.38 M ²		


KEY :

— = Radiator

7'5"
2.26m = Ceiling Height



SECOND FLOOR

Property Details: MONTFORD HOUSE 25 QUEENS ROAD RICHMOND SURREY, TW10 6JW		Surveyed and Drawn By:  Sunnyhill House, 3-7 Sunnyhill Road London, SW16 2UG Tel: 0845 257 2023 Fax: 0845 257 2024 info@bkrfloorplans.co.uk www.bkrfloorplans.co.uk © BKR 2011
SCALE 1:200 @ A4	Plans Drawn: 09.09.2011	
ILLUSTRATION FOR IDENTIFICATION PURPOSES . * As Defined by RICS - Code of Measuring Practice APPROX. GROSS INTERNAL AREA * 6764 Ft ² - 628.38 M ²		