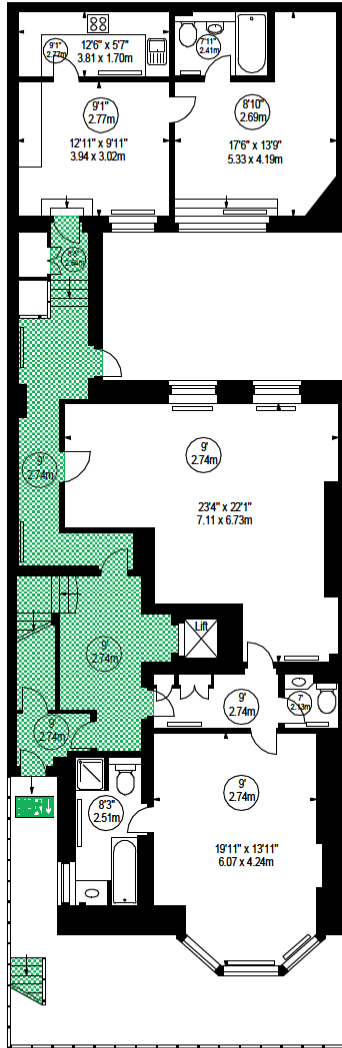


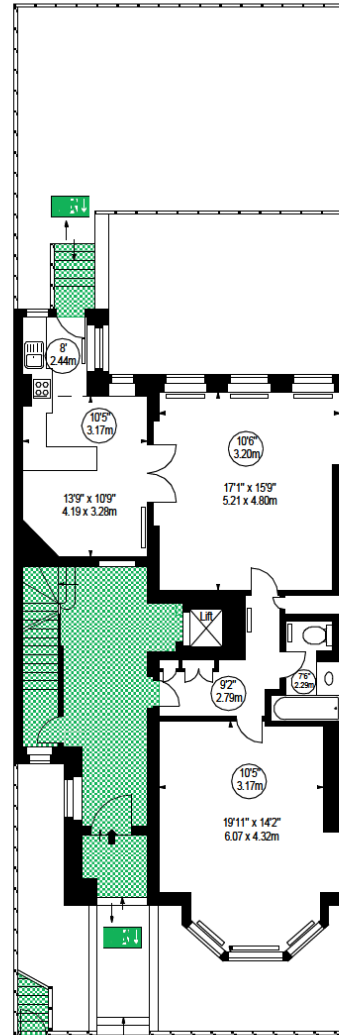
KEY :

— = Radiator

7'5"
2.26m = Ceiling Height



LOWER GROUND FLOOR



GROUND FLOOR

FIRE
PLAN

Property Details:

3 COLLINGHAM GARDENS
RICHMOND UNIVERSITY
KENSINGTON
LONDON, SW5

SCALE
1:200 @ A4

Plans Drawn:
26.08.2011

ILLUSTRATION FOR IDENTIFICATION PURPOSES .
* As Defined by RICS - Code of Measuring Practice

APPROX. GROSS INTERNAL AREA *
5771 Ft² - 536.13 M²

Surveyed and Drawn By:



BKR

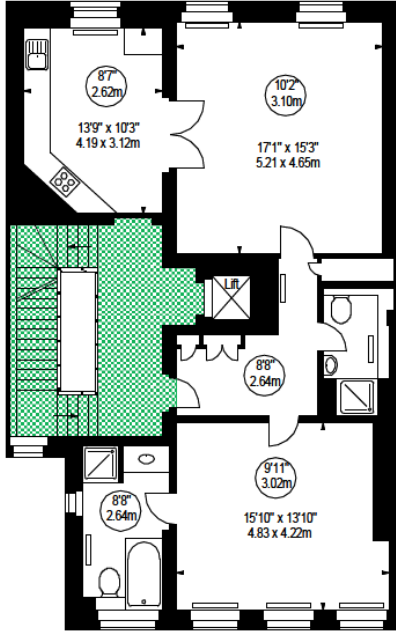
Sunnyhill House, 3-7 Sunnyhill Road
London, SW16 2UG

Tel: 0845 257 2023
Fax: 0845 257 2024
info@bkrfloorplans.co.uk
www.bkrfloorplans.co.uk

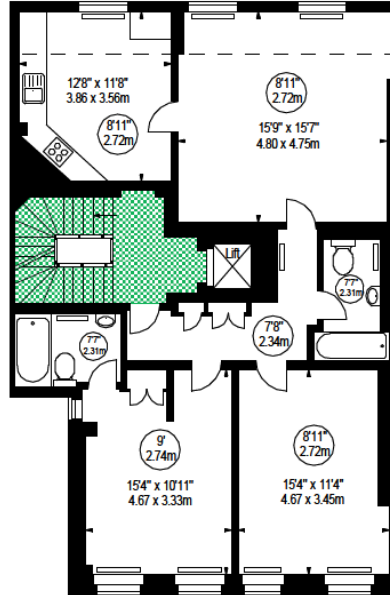
© BKR 2011

KEY :

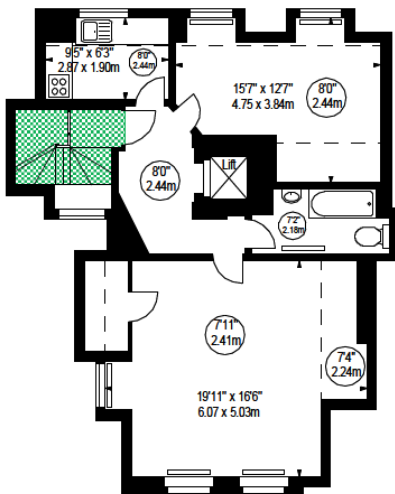
-  = Radiator
-  = Ceiling Height



FIRST FLOOR




SECOND FLOOR



THIRD FLOOR

Assembly Point:
Pavement on other side of
Collingham Gardens Road

**FIRE
PLAN**

Property Details: 3 COLLINGHAM GARDENS RICHMOND UNIVERSITY KENSINGTON LONDON, SW5		Surveyed and Drawn By:  Sunnyhill House, 3-7 Sunnyhill Road London, SW16 2UG Tel: 0845 257 2023 Fax: 0845 257 2024 info@bkrfloorplans.co.uk www.bkrfloorplans.co.uk © BKR 2011
SCALE 1:200 @ A4	Plans Drawn: 26.08.2011	
ILLUSTRATION FOR IDENTIFICATION PURPOSES . * As Defined by RICS - Code of Measuring Practice APPROX. GROSS INTERNAL AREA * 5771 Ft ² - 536.13 M ²		